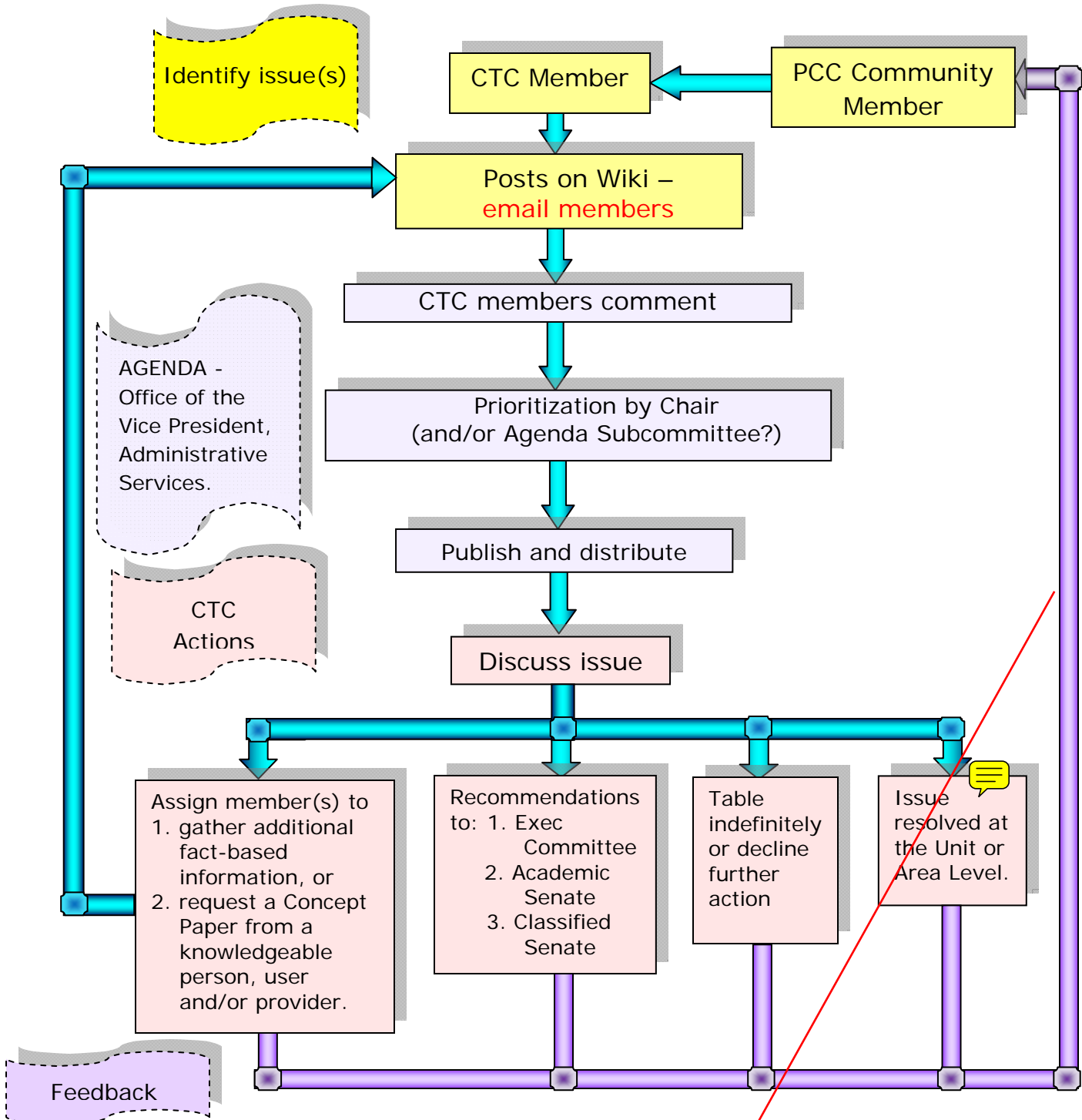


Campus Technology Committee Process Work Flow v.3

jlr – 06.03.08



THE FOLLOWING ARE PART OF THE CONCEPT PAPER, BUT LACK A CLEAR PLACE IN THE FLOW CHART

1. Refer an item to a Unit Manager for incorporation into a Unit Plan. (Note, the Unit may have already incorporated the item in its Unit Plan.)
2. Refer an item for inclusion in an Area Plan. (Note, the Area may have already incorporated the item in its Area Plan.)
3. Take some of the concept papers to the Spring Strategic Planning Retreat for consideration to be included in a college goal.